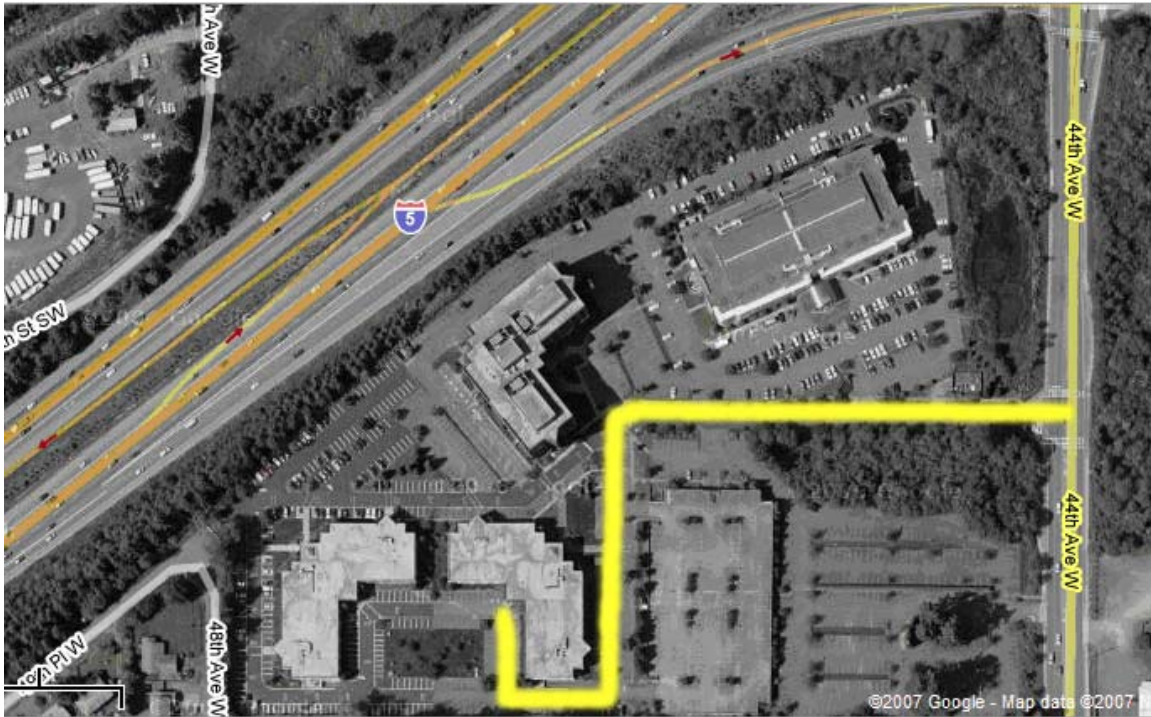


DIRECTIONS TO THE PUBLIC SAFETY TESTING OFFICE
20818 – 44TH Ave W, Suite 160, Lynnwood, WA 98036



DIRECTIONS:

Traveling On NORTHBOUND I-5: Take Exit #181-A (Lynnwood). Turn right onto 44th Avenue West. Turn right into the Northview Business Park, which will be the next stoplight at the 20800 block. Proceed past the Embassy Suites Hotel and the Public Safety Testing office is in the EPICOR 20818 building on your left. Our office is on the 1st floor, suite 160, and the main entrance is on the back side of the building. *Please use the visitor parking that is available; please do not park in the "Permit Parking" spots. You are welcome to park in the 1st or 2nd floor garage which is east of our building.*

Traveling On SOUTHBOUND I-5: Take Exit #181 (SR 524/Lynnwood) to westbound SR524. Veer right onto 196th St SW (westbound). Turn left onto 44th Avenue West. Follow 44th Ave W for about 1 mile and turn right at the stoplight at the 20800 block into the Northview Business Park. Proceed past the Embassy Suites Hotel and the Public Safety Testing is in the EPICOR 20818 building on your left. Our office is on the 1st floor, suite 160, and our main entrance is on the back side of the building. *Please use the visitor parking that is available; please do not park in the "Permit Parking" spots. You are welcome to park in the 1st or 2nd floor garage which is east of our building.*